

Multi-Agency Co-ordinated Pathway

Our vision for children and young people in York is outlined in our SEND strategy and states that:

All children and young people will achieve their potential, become confident individuals, live fulfilling lives and successfully transition into adulthood - 'safe, resilient, achieving and included'

The multi-agency local area Strategic Partnership for Disabled Children sets the strategy and monitors its implementation to improve the outcomes for children and young people with SEND. Co-production and collaboration between agencies, professionals and parents is embedded in York and drives our local area partnership.

The purpose of this document is to ensure a shared understanding of the multiagency pathways through identification of need, high quality assessment and appropriate outcomes and provision for all children and young people with SEND in York.

Our processes are continuing to evolve but are underpinned by a commitment from all local partners to improve outcomes for children and young people with SEND.

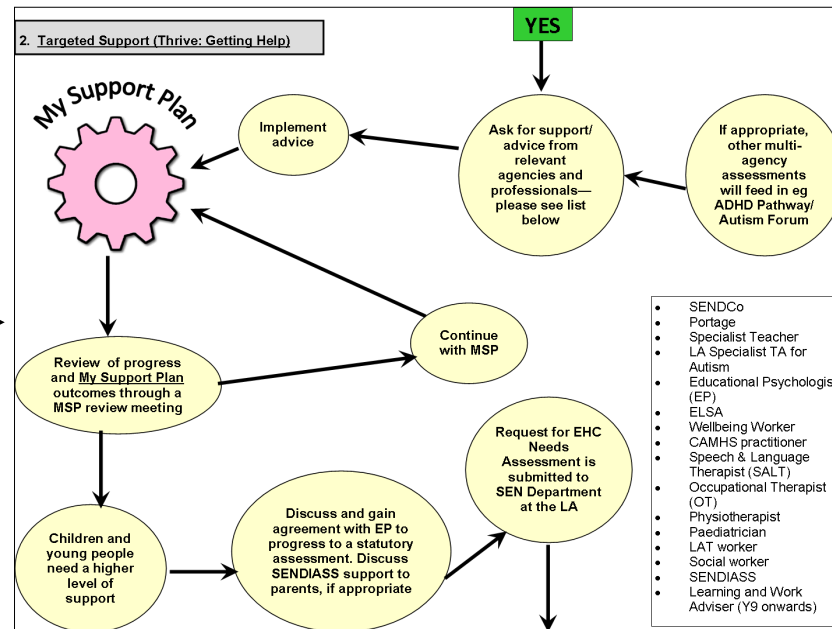
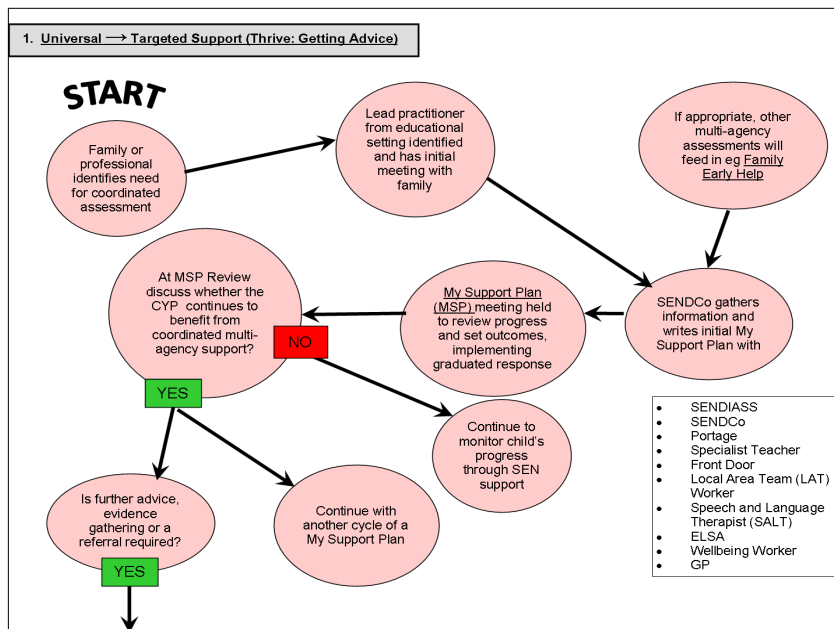
We expect all multi-agency partners to implement a graduated response involving the "Assess, Plan, Do, Review" cycle.



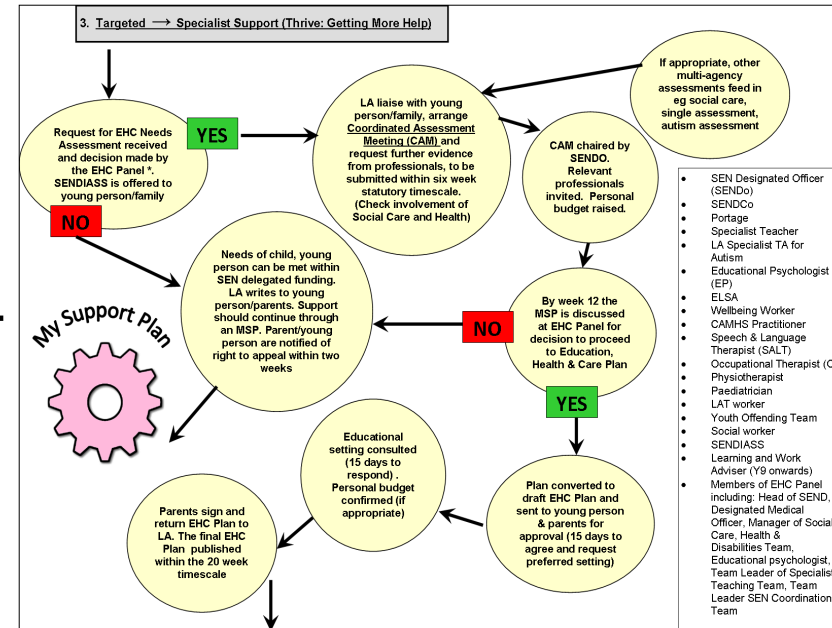
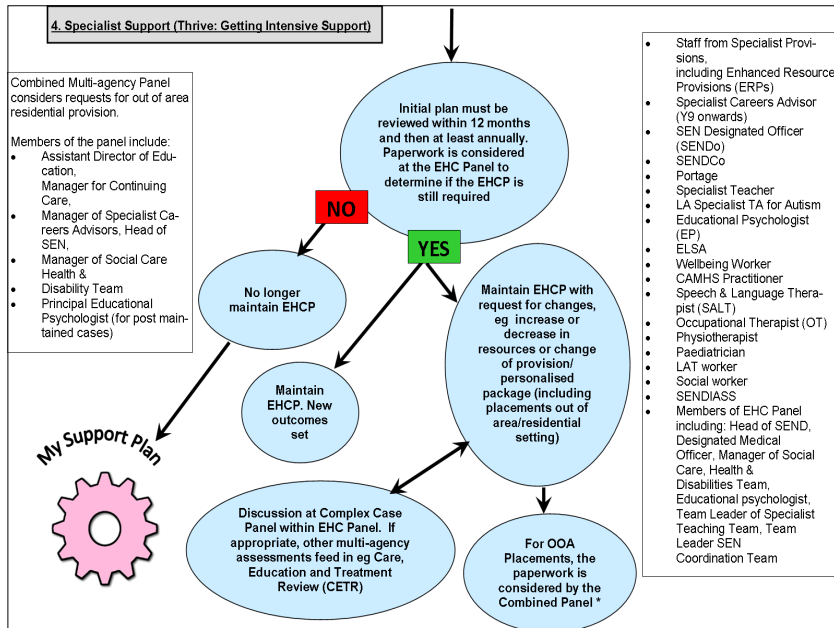
1

Overview of Co-ordinated Pathway

2



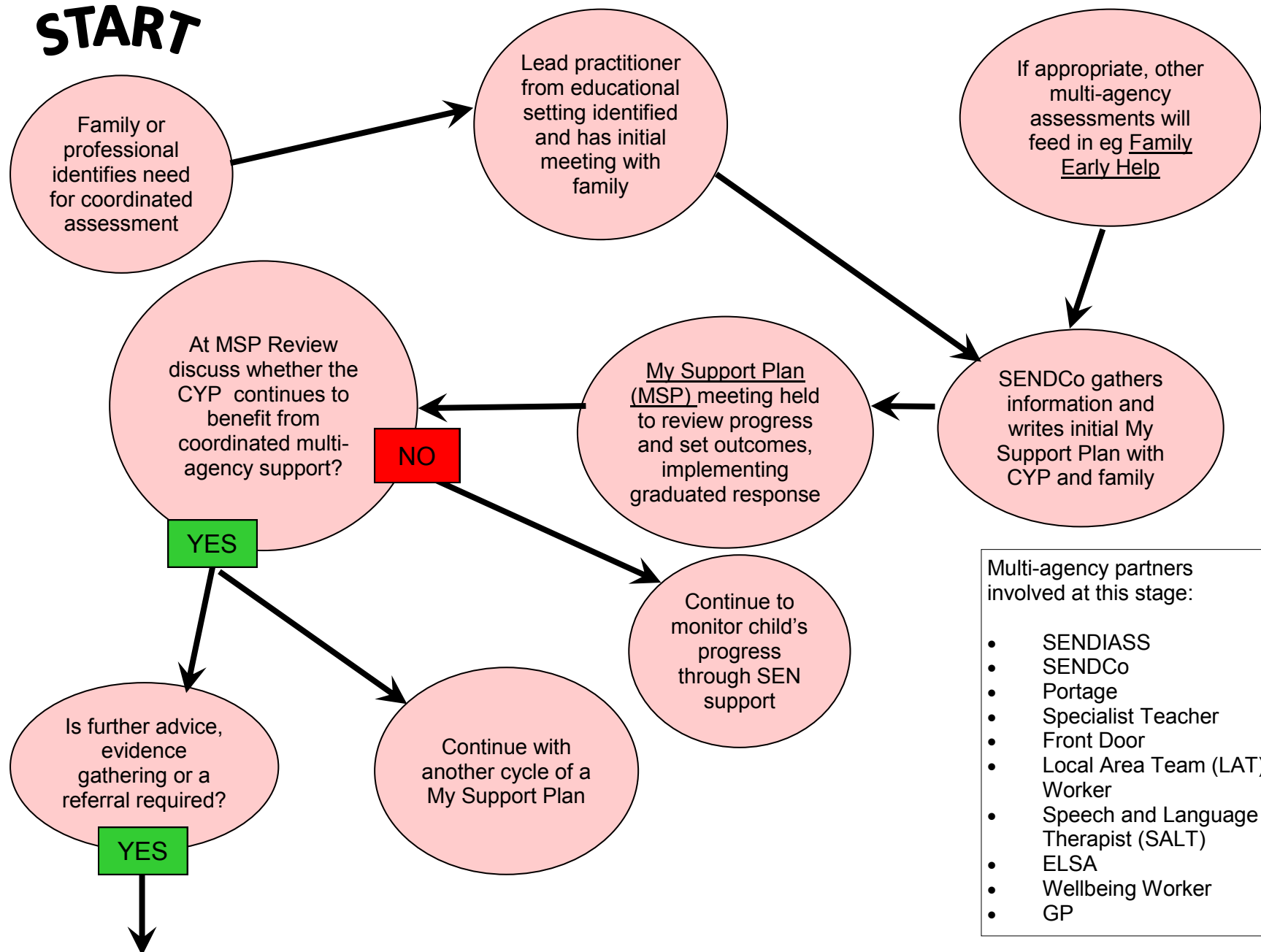
4



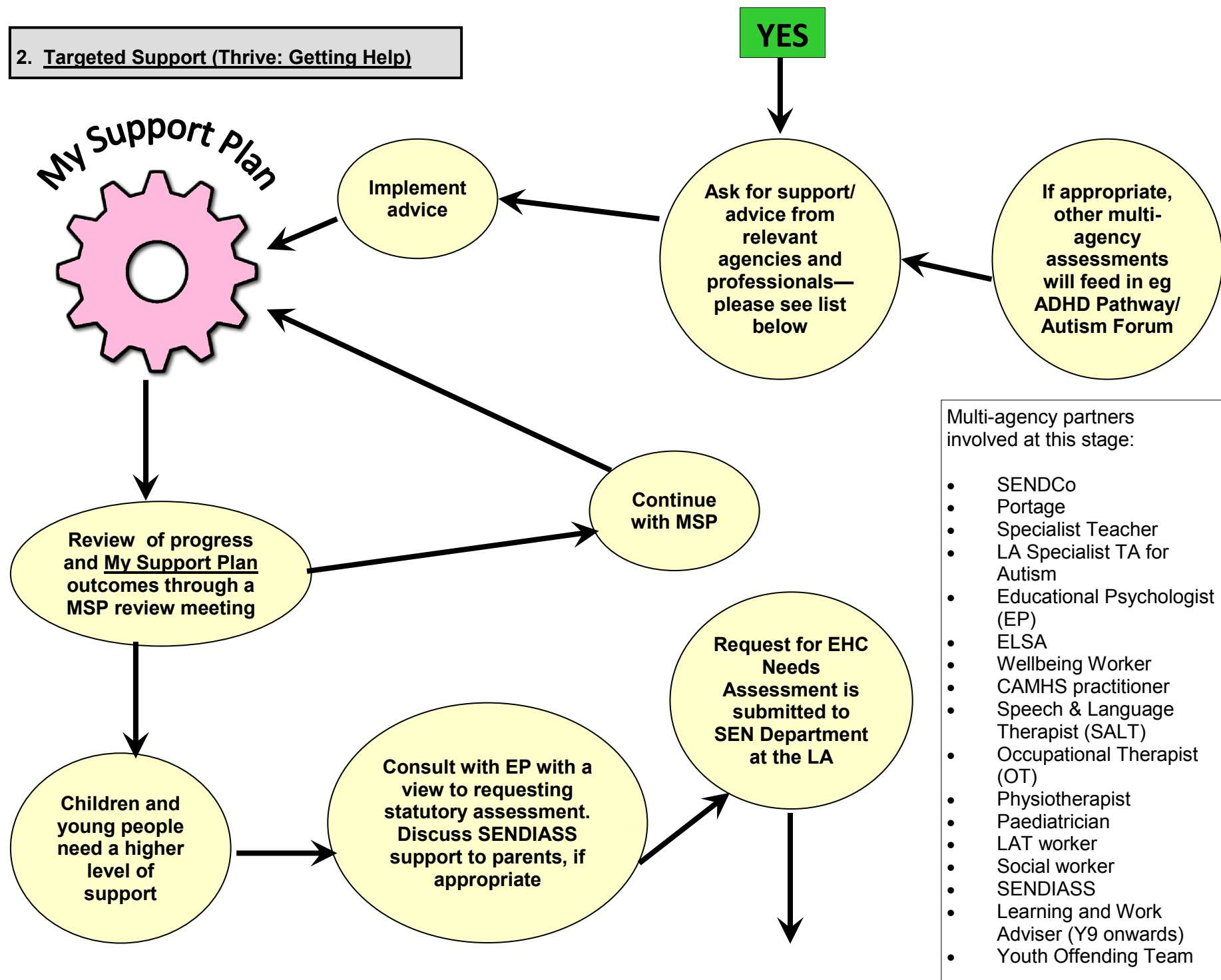
3

1. Universal → Targeted Support (Thrive: Getting Advice)

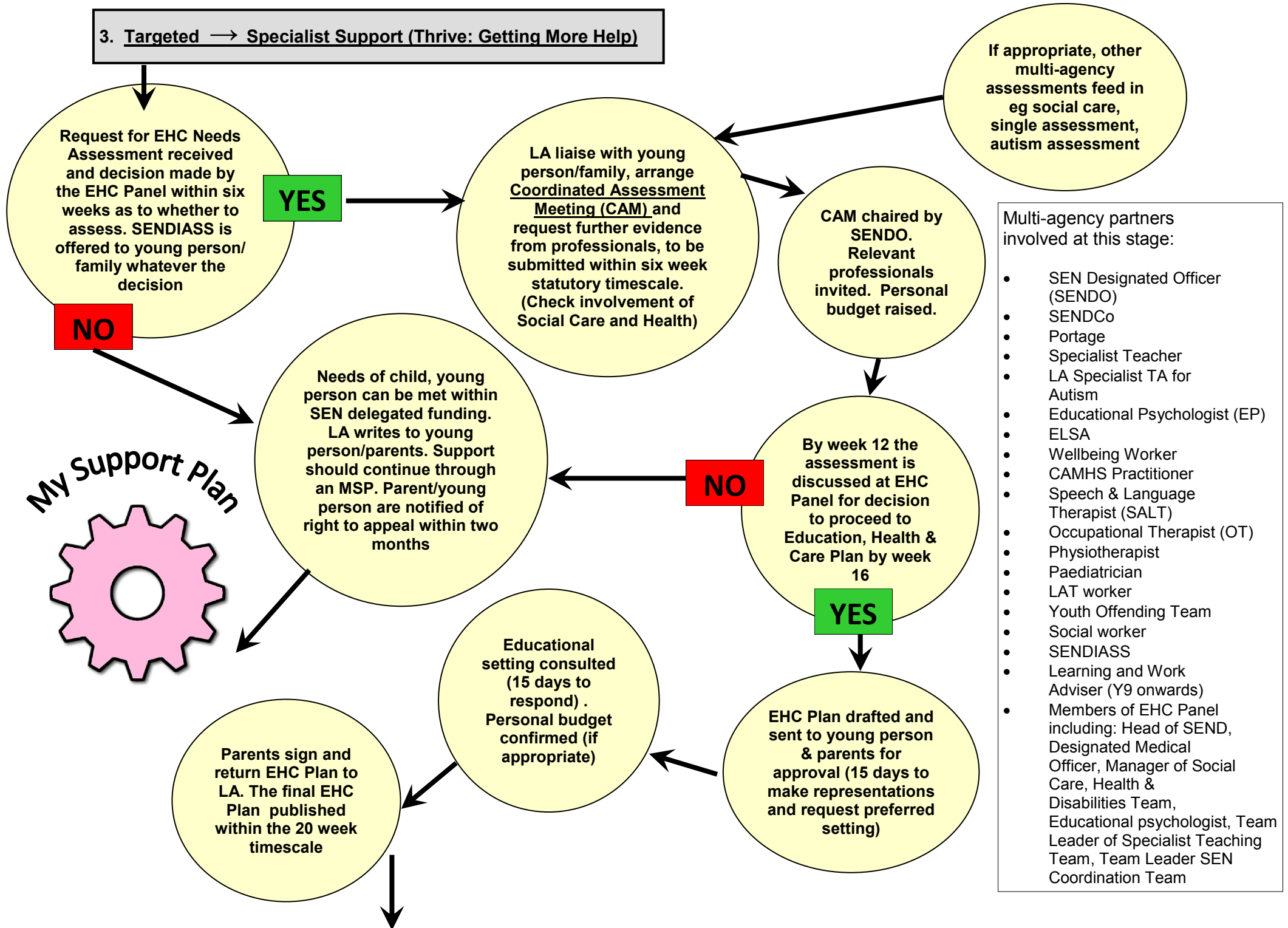
START



2. Targeted Support (Thrive: Getting Help)



3. Targeted → Specialist Support (Thrive: Getting More Help)

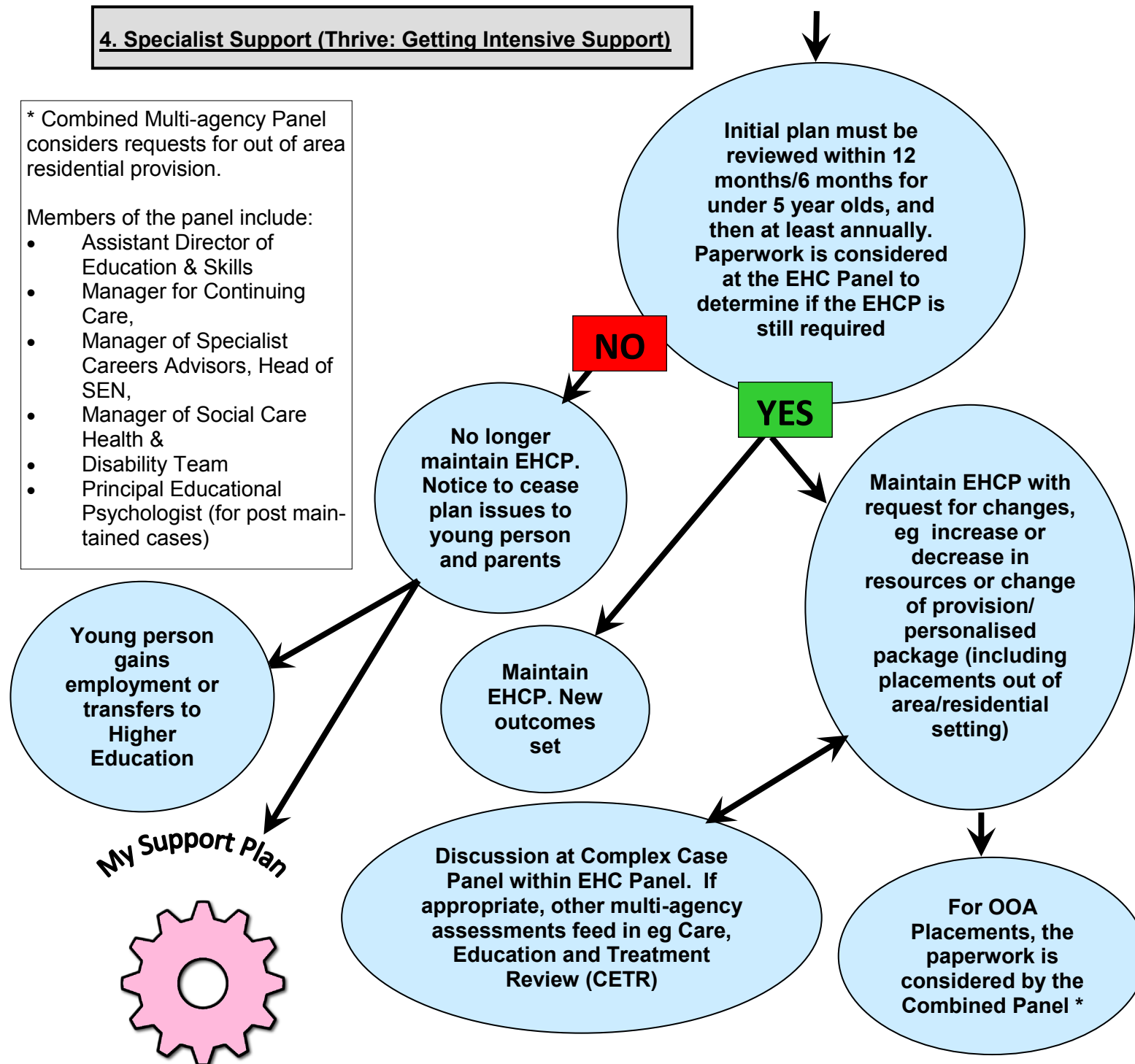


4. Specialist Support (Thrive: Getting Intensive Support)

* Combined Multi-agency Panel considers requests for out of area residential provision.

Members of the panel include:

- Assistant Director of Education & Skills
- Manager for Continuing Care,
- Manager of Specialist Careers Advisors, Head of SEN,
- Manager of Social Care Health &
- Disability Team
- Principal Educational Psychologist (for post maintained cases)



Multi-agency partners involved at this stage:

- Staff from Specialist Provisions, including Enhanced Resource Provisions (ERPs)
- Specialist Careers Advisor (Y9 onwards)
- SEN Designated Officer (SENDO)
- SENDCo
- Portage
- Specialist Teacher
- LA Specialist TA for Autism
- Educational Psychologist (EP)
- ELSA
- Wellbeing Worker
- CAMHS Practitioner
- Speech & Language Therapist (SALT)
- Occupational Therapist (OT)
- Physiotherapist
- Paediatrician
- LAT worker
- Social worker
- SENDIASS
- Members of EHC Panel including: Head of SEND, Designated Medical Officer, Manager of Social Care, Health & Disabilities Team, Educational psychologist, Team Leader of Specialist Teaching Team, Team Leader SEN Coordination Team